

AEOLUS TYRES
Technology Meets Performance

TRUCK & BUS TYRES

Aeolus Tyres	p. 02
Aeolus Green Tyre	p. 03
The Aeolus casing warranty	p. 04
Aeolus Eco-Twin	p. 05
Aeolus breakdownservice	p. 06
Choose Aeolus	p. 07
Team Aeolus	p. 08
Recommended uses	p. 10
Pattern designations	p. 11
Summary of uses	p. 12
EU tyres label	p. 14
 Regional	p. 15
 Long distance	p. 23
 Onroad/offroad	p. 33
 Urban traffic	p. 37
 Winter	p. 39
 Off-road driving	p. 41
Technical data	p. 43
Regrooving	p. 50
Aeolus accessories	p. 53
Size overview	p. 54

Including: Aeolus NEO series supplement
in the middle of this brochure.



Aeolus: global player in truck, OTR and agricultural tyres

Aeolus Tyre Co. Ltd. was founded in 1965 in Jiaozuo, China. Exports started in 1998 and Aeolus reached Europe in 2002. The Aeolus team has introduced Aeolus tyres to the 9 most important markets. The brand continues to grow thanks to the team's hard work and enthusiasm.

In the meantime, Aeolus has become a household name in Europe and has massively improved its market share over the past 10-plus years. Aeolus truck tyres – which is where everything started in Europe – are now on the shortlist of many transport companies.

Since being founded, Aeolus has focussed on truck, OTR and agricultural tyres. Exports to Europe initially involved truck tyres, but this was closely followed by OTR tyres, which is another

sector where, as No.1 in China, Aeolus has a lot of experience. Aeolus has also been producing a wide range of agricultural tyres (specials) since 2008.

Aeolus Tyres is part of the China National Chemical Corporation (ChemChina) and is one of the leading tyre manufacturers in China.

Aeolus has developed high-quality modern tyres for the truck and trailer segments. All tyres feature properties required by European customers: fully certified, properly labelled, featuring the best casing technology, with modern patterns and at competitive prices. Customers appreciate the tyres because they have a low kilometre/price ratio, are durable and help to improve profits.

Aeolus Green Tyre: Clean & sustainable tyre production







Aeolus is aware of its responsibilities as tyre manufacturer. Tyres production can have a major impact on the environment - during production and at the end of the life cycle. In the interest of future generations, Aeolus has done everything to earn the 'waste zero emission label'.

Tyres produced using this modern method leave the factory with an AGT – Aeolus Green Tyre – label. This plays an important role in reducing raw materials, environment pollution and fuel-related costs. These tyres are easy to recognise thanks to the special AGT logo.

The tailor-made production method (without toxic components), which includes the latest machines, takes into account raw materials, production processes and waste management. This means Aeolus also complies with mandatory requirements under the European REACH programme (REACH stands for Registration, Evaluation, Authorisation and Restriction of Chemicals). REACH is an EU directive and applies in every member country.

Another positive outcome of this method, which was introduced many years ago, is that produced tyres help to realise lower fuel consumption and lower noise production. Things like the casing guarantee, casing management, tread renewal (Eco-Twin) and the Breakdown Service also help to further improve the performance of users' businesses.



 Aeolus is investing in energy saving in the production process.	 Waste Water Zero Emission: Aeolus does not discharge dirty water into the sewers.	 Aeolus tyres are energy-saving tyres.
 Aeolus tyres are durable.	 Aeolus gives tyres a second life thanks to quality retreading.	 Aeolus tyres are compliant with the REACH standard.

Aeolus Eco-Twin: a second life for tyres

Hot retreading – what is it? Engineers and technicians understand this to mean something known as vulcanisation. This is a common procedure in the commercial vehicle sector.

This method is known as Eco-Twin by Aeolus. Before it is applied, the casing undergoes an extensive quality control procedure. X-raying and / or sheargraphy are the industry standard for this. The tyre is only passed for the system process once it has been established that it meets the prescribed standards. The casing is then buffed so as to ensure that the best possible new connection to the tread can be achieved. To make this technically possible, the tyres to be retreaded are heated to a temperature of around 150 degrees Celsius. With this, the tread is joined – vulcanised – to “its” base, the casing. A separate mould is required for each dimension for this complex procedure. As far as quality is concerned, a tyre retreaded in this way does not differ much from its first-life “siblings”. As a result, there are generally no real losses in direct comparison with new tyres in terms of the most important benchmark data for the tyre.

Environmental protection and economisation on resources on the one hand, and interesting financial considerations on the other – this is the Aeolus casing warranty. An extremely robust basic tyre structure, the casing, forms the basis for the top quality hot retreading process, known as the Eco-Twin. This process is used when the tyre has reached the end of its first life, when the new pattern has been used up and professional regrooving is required. The casing warranty and Eco-Twin are an elementary component of the Driveability concept in which new tyres on the steer axle and drive axle of the truck are combined with tyres on the first trailer axle which have been given a second chance.

This offers haulage companies significant – read: monetary – benefits. This is possible due to the fact that around 70 per cent of the total mass of the tyre is “put back on the road”. This would immediately have a sustainable effect on more positive earnings and cost effectiveness at any company. And with it comes the knowledge that the tyre has been recycled, rather than being dumped somewhere. Here, too, the company underlines its claim of being able to offer a genuine alternative to the famous premium brands.

Safety

Mileage

Grip

Resistance

Handling

Traction

Road noise

The Aeolus casing warranty



Aeolus Breakdown Service: Quick into action

Demands on the logistical process are becoming more and more exacting. For haulage companies, reliability has become an absolute must. There are lots of unexpected things that can go wrong on the road, and this is one reason why Aeolus takes the view that users must be able to rely on the quality of Aeolus products and also the best possible service at any time.

Get back on the road quickly in the event of an incident. Aeolus has brought its Breakdown Service in especially for end users. This is a 24-hour pan-European breakdown service. From its own European Service Centre, Aeolus offers users a precise, top quality breakdown service with the help of more than 7,400 tyre specialists. The service vehicles are equipped to allow Aeolus fitters to work quickly and efficiently and help out customers wherever they are, so keeping downtime to an absolute minimum.

The Service Centre can be contacted 24 hours a day, 7 days a week – in whichever language you prefer. Just call +32 3 540 51 25. The Aeolus Breakdown Service is able to offer favourable prices thanks to fixed agreements with its partners in Europe.



**Aeolus
Breakdown Service**
Always there for you:
T: + 32 3 540 51 25

Looking for quality, economy and efficiency at a fair price? Try Aeolus.

Choose **AEOZUS**



Quality

Aeolus develops and produces tyres to the international standards of the important institutes and the accompanying test seals. The casing warranty underscores the company's confidence in its basic quality.



Service

Aeolus does not use empty words. What is provided is living reality: from the expert sales and service team, who are always ready to help, to the comprehensive pan-European breakdown service.



Availability

Almost all sizes and patterns are available from stock: possibly via the enormous (24,000 m²) sales centre in Hardenberg/Netherlands and the distribution centre in Bayreuth (Germany) and Lyon (France).



Broad spectrum

The Aeolus product range includes an extremely broad spectrum of products for almost every purpose: for trucks, earth-moving machinery, agricultural vehicles and special vehicles.



Price

In terms of the core skills of quality, durability and safety on the one hand and price on the other, Aeolus is well known as the alternative to the famous premium brands.



Research & Development

Several hundred engineers and technicians are constantly working intensively to find new ways of optimising the tyres available in order to meet the demands of the market.



Sustainability

Aeolus is investing in green manufacturing and production and is even meeting the ambitious limits for the "Waste Zero Emission" label and the REACH programme.



Aeolus Casing Management

Environmental protection and sustainability really do pay off for haulage companies: the retreaded casings are purchased, and of course any which cannot be used are disposed of correctly.



Aeolus Breakdown Service

Back on the move quickly: the Aeolus Breakdown Service gets you back on the road quickly - 24 hours a day, 365 days a year, anywhere in Europe, with minimal downtime

The Aeolus team: professional, transparent and friendly

Maximum service and the very best advice - that's what the Aeolus team stands for. The most important thing is to answer every customer request quickly and to the customer's satisfaction. We want you to experience the best customer service and enjoy doing business. We have summarised this as: Maximum Service.

The Aeolus team will personally assist you during office hours and will protect your interests. We do what we say and our word is our bond. That's what customers can count on!

Our aim is to help further develop the Aeolus brand. Top service and top quality go hand in hand, as you would expect from a leading brand. This is something we can guarantee! And you can blindly rely on us to deliver.

The Aeolus European team exclusively imports Aeolus tyres for Germany, Belgium, the Netherlands, Luxembourg, Denmark, Austria, France, Switzerland and Romania.



Jeroen Vos
Business Unit Manager
E j.vos@aeolus-tyres.com
T +31 (0)6 155 755 48



Gellu Cormos
Account Manager Romania
E g.cormos@aeolus-tyres.ro
T +40 (0)740 248 932



Marjolein Dangremond
Key Account Manager
E m.dangremond@aeolus-tyres.com
T +31 (0)6 100 814 85



Lucian Urda
Account Manager Romania
E l.urda@aeolus-tyres.ro
T +40 (0)740 066 670



Jochem Dragt
Customer Service
E j.dragt@aeolus-tyres.com
T +31 (0)523 - 850 850



AEOLUS TYRES
Technology Meets Performance

Recommended uses

Aeolus offers a massive range of commercial vehicle tyres for almost every purpose. Its range includes a broad selection of market-relevant tyre sizes and patterns for light and heavy-duty trucks, commercial vehicles, articulated lorries, and trailers, and tyres for steer axles, drive axles and trailer axles. There are patterns for every purpose: long distance or regional use, mixed use, onroad and offroad,

on construction sites, in the country, in urban areas or for hard winter use. All tyres meet the expectations which people have nowadays for modern, top quality tyres with a long service life; while also providing quality at an extremely economical price. Hence the company's own claim: Aeolus technology meets performance.



Regional

Use on A and B roads, with regular moving off and braking. Short distances and lots of stops characterise typical distribution/delivery usage. (Also suitable for combination long distance/distribution use.)



Urban traffic / buses

Urban buses are a special target group, as are street cleaning vehicles and refuse collection vehicles. These are designed for regular acceleration and braking with heavy loads, and so they come with reinforced side walls to prevent damage.



Long distance

Long distances which can be travelled on long journeys using A-roads and motorways at almost constant speed with few interruptions (not much moving off or frequent braking).



Winter

Tyres bearing the M+S marker and/or the industrial "snowflake" symbol have been developed especially for use under all winter conditions – snow and ice, and mud and rain – at low temperatures.



Onroad/offroad

The focal point here is mixed traffic, both beyond paved roads and for use on construction sites as necessary, with all the resultant challenges faced by the equipment used in such environments.



Offroad use

For use on rough terrain, such as at quarries or almost exclusive use on construction sites, requiring constant good tyre grip and also providing effective protection from collision and damage.



Tyre type immediately visible

The continuing and ever increasing success of Aeolus can partly be attributed to simple type markings on the side of each tyre. This means use, purpose and axle position immediately become visible thanks to specific letter coding.

The continuing and ever increasing success of Aeolus can partly be attributed to simple type markings on the side of each tyre. This means use, purpose and axle position immediately become visible thanks to specific letter coding.

The two digits which follow are the sequence number for the tyres.

Example:

A	Aeolus
D	Drive / Aandrijf-as
R	Regionaal
69	Serienummer

Standard markings on the side of tyres consist of three letters and two numbers:

- The first letter is always A (for producer Aeolus).
- The second letter refers to the axle position.
- The third letter refers to the use/purpose.

A summary of possible letter combinations:

A Aeolus

S Steer
D Drive
T Trailer
G General

M Mud / Off Road
C Construction / Onroad/offroad
R Regional
L Long Distance
B Bus
W Winter

The complete summary of uses – the right tyres for all market segments

The right tyres for every purpose. With this philosophy, Aeolus offers just the right products to suit all kinds of customers' needs and requirements for almost all commercially relevant market segments.

Covering the entire range, from local and regional traffic, usage on construction sites or in gravel pits or quarries to

international long distance traffic, the Aeolus team has just the right tyres for steering, drive and trailer axles. Customers' requests for very unusual applications can also be met from stock in Hardenberg (the Netherlands), Bayreuth (Germany) or Lyon (France) on a 24/96-hour turnaround, providing tyres for vehicles such as airport fire service vehicles, wheeled loaders or excavators.

A Aeolus

S Steer
D Drive
T Trailer
G General

M Mud / Off Road
C Construction / Onroad/offroad
R Regional
L Long Distance
B Bus
W Winter

	Regional	Long distance	Onroad/offroad	Urban traffic	Winter	Offroad use
Steer	ASR24 P. 16 ASR35 P. 16 ASR69 HL P. 17 HN257 P. 17 HN207 P. 17	ASL06/HN252 P. 24 HN227 P. 24 HN267 P. 24			ASW80 P. 36	
Drive	ADR35 P. 18 HN366+ P. 18 ADR69 P. 19 HN355 P. 19 HN306 P. 19	ADL67 P. 25	HN352 P. 32 ADC53 P. 32		ADW80 P. 36	
Trailers	NEO ALLROADS T+ P. 20 ATR65 / ATR65+ P. 20 HN230+ P. 20	HN809 P. 26 HN829 P. 26 ATL35 P. 27 HN828+ P. 27				
General			AGC28 P. 30 AGC51 P. 30 HN08 P. 31 HN253 P. 31	AGB20 P. 34		HN10 P. 38

EU tyres label: more transparency and equal opportunities

The EU tyres label has been applicable since 1 November 2012.

It provides information. Explicit information on three properties of new truck and bus tyres must be provided with this: rolling resistance, grip under braking in the wet, and external rolling noise.

This includes:

- the quality,
- the very competitive price,
- the high mileage that can be achieved with long service life,
- the eco-friendly manufacture under the designation Aeolus Green Tyre (AGT),
- the option for hot retreading (Eco-Twin) in connection with the Aeolus Driveability Concept, combined in the new and renewed tyres.

"All these factors help to offer the entire transport industry an attractive alternative to the 'big' names."

The EU Ordinance numbered 1222/2009 was issued initially, aiming to make information for consumers more transparent. In addition, safety and economy in the EU transport business should increase, while the environmental impact of freight traffic should fall further. We are expecting the labelling obligation to provide a more comprehensible purchasing process, with better opportunities for young brands like ours. This will allow us to communicate the other advantages of our tyres in connection with the consistently comprehensible label values."



Fuel efficiency

The fuel efficiency of tyres (fuel consumption and CO2 emissions) is measured by means of the rolling resistance.

The fuel consumption of a vehicle is determined by a number of factors, including the type of vehicle, its speed, driving style, air resistance and weather conditions, but of course the rolling resistance of the tyres as well. A tyre can bear markers A to F for fuel efficiency. (The G marker is not used.)



Grip on wet roads

The most important function of a tyre is to offer safety – in all conditions. Grip on wet roads is therefore one of the most important performance features.

Grip on wet roads can vary, depending on the type of vehicle or the weather conditions. Tyres with the A marker must always offer a braking distance which is 30% shorter than for tyres with the F marker. (The G marker is not used.)



Noise emissions

When measuring noise emissions (external tyre noise), the noise caused by the tyres is determined.

Noise emissions are expressed in decibels (dB). The noise level is divided into three categories (or noise emission classes) in accordance with the new EU rules which was introduced in 2016.

3 dB less than the future EU standard.

already compliant with the future EU standard.

compliant with the current EU standard.



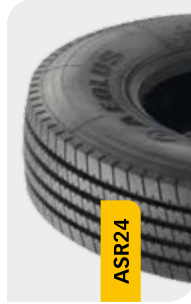
Regional





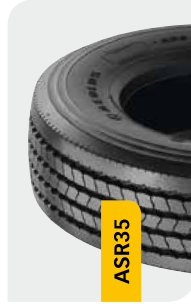
For steer axles on light trucks

The development team has produced a specification which meets the requirements of the pattern and allows these tyres to withstand the familiar, extremely tough conditions to which they will be exposed every day as the vehicles on which they are fitted perform both new and existing duties, such as delivery and courier services.



ASR24

- Extra-wide tread and large ground contact area for greater safety
- Optimised adhesion, greater resistance to damage
- Special rubber compound for optimum traction and short braking distances
- Precise manoeuvrability thanks to a specially designed steer axle pattern
- Robust shoulder and high cornering stability
- Designed for stop-and-go driving and turning in small areas
- More even rubber wear and lower fuel consumption
- High mileage performance, reliability and excellent economy



ASR35

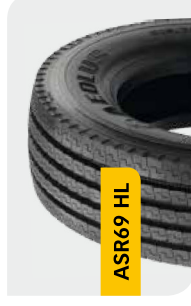
- For ideal grip and greater resistance against damage
- Special rubber mix offers perfect traction and short braking distances
- Accurate steering behaviour thanks to special pattern on steering axle version
- Stable shoulder, thus better stability in bends
- Suitable for twisting and turning (manoeuvres) in small spaces

This specification includes a robust basic structure and casing, including the side wall design, the appropriate design for extremely precise steering and cornering, and the requisite directional stability during really fast stages when time pressure means drawing on reserves.



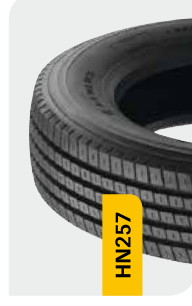
For steer axles: safe for town and country

With these tyres, haulage companies can handle most of the situations encountered every day in city traffic as well as using their vehicles in an urban environment. These tyres were designed for general use in medium to heavy distribution transport. The particularly robust design of the overall tyre structure, including the casing, provides the foundation.



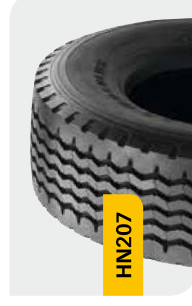
ASR69 HL

- A specially designed pattern on the steer axle permits precise manoeuvrability
- Particularly robust shoulder and greater cornering stability
- Ideal for stop-and-go driving and turning in very tight spaces/small radii
- Extra-wide, regular tread for a larger ground contact area
- Improved rolling behaviour and a more even wear
- High load version for Euro6 vehicles
- High mileage and economy



HN257

- Robust design for the entire tyre structure, including the casing
- Precise manoeuvrability thanks to the pattern designed for the steer axle
- Greater cornering stability due to the robust tyre shoulder area
- Ideal for small radii – stop-and-go driving and turning in confined spaces
- Lower fuel consumption compared with the previous model
- More even wear permits high mileages
- Particularly economical and efficient for any fleet



HN207

- Wide tread, vibration-optimised for steer axles as well
- Additional safety thanks to consistent adhesion
- Exceptionally resistant to damage
- High-performance rubber compound for even wear
- Five wide, deeper grooves provide a more useful pattern
- Great economy thanks to special mileage performance
- Regroovable and retread-compatible for the Eco-Twin procedure (385/65R22.5)

Size	Pattern	L/S index	TL/TT	M+S	3PMS			DB	Class
9.5R17.5	ASR24	136/134M	TL	M+S	E	C	C	73	4)
205/75R17.5	ASR35	124/122M	TL	M+S	D	C	C	71	4)
215/75R17.5	ASR35	127/124M	TL	M+S	C	C	C	71	4)
225/75R17.5	ASR35	129/127M	TL	M+S	D	C	C	71	4)
235/75R17.5	ASR35	132/129M	TL	M+S	C	C	C	71	4)
245/70R17.5	ASR35	136/134M	TL	M+S	D	C	C	71	4)

Size	Pattern	L/S index	TL/TT	M+S				DB	Class
265/70R19.5	HN257	140/138M	TL	M+S	C	C	C	73	4)
285/70R19.5	HN257	144/142M (145/143L)	TL	M+S	C	C	C	73	4)
10R22.5	HN257	144/142M	TL	M+S	C	C	C	73	4)
11R22.5	HN257	146/143M (148/145L)	TL	M+S	C	C	C	73	4)
12R22.5	HN257	152/149M	TL	M+S	C	C	C	73	4)
255/70R22.5	HN257	140/137M (140/140L)	TL	M+S	C	C	C	73	4)
275/70R22.5	HN257	148/145M	TL	M+S	C	C	C	73	4)
295/60R22.5	HN257	149/146L (150/147K)	TL	M+S	C	C	C	73	4)
295/80R22.5	ASR69 HL	154/149M	TL	M+S	C	C	C	72	4)
315/70R22.5	ASR69 HL	156/150L (154/150M)	TL	M+S	C	C	C	74	4)
315/80R22.5	ASR69 HL	158/150L (154/150M)	TL	M+S	C	C	C	74	4)
385/65R22.5	HN207	160K (158L)	TL	M+S	C	C	C	76	4)



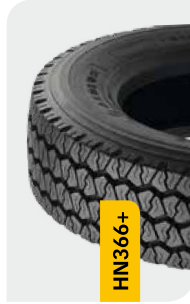
For drive axles on light trucks

Drive axles have undergone further development especially for use on light trucks. The ADR35 provides the smaller, financially relevant 17.5-inch versions with the available sizes. Because of its incisive, four-row pattern design with a strong shoulder area, the HN366+ is suitable for daily regional use on vehicles using 19.5-inch tyres. Other options include improved



ADR35

- Safety thanks to the extra-wide tread design
- Shorter braking distances thanks to a large ground contact area
- Five-row tread profiling for an even wear pattern.
- Optimised adhesion under almost all weather conditions
- A new rubber compound as a basis for high mileage performance
- Improved traction in adverse weather conditions



HN366+

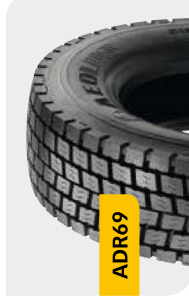
- Optimised pattern design for more situational performance
- New rubber compound technology for the tread
- Distinctive four-row tread profiling for driving performance
- A reinforced tyre structure ensures more even pressure distribution
- New design forms the basis for high mileage
- Improved grip, even in adverse weather conditions



For city and countryside on the drive axle

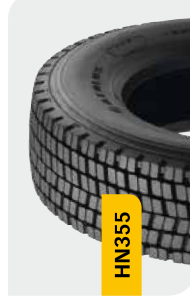
In terms of design, these tyres provide a basis for greater safety and shorter braking distances thanks to their extra-wide tread pattern, providing a larger ground contact area. Here, particular attention was paid to the bead area and tread design.

Both were arranged to provide improved overall performance for the purpose of driving in urban areas and on A and B roads. New technology also permit improved ground pressure distribution, working together with the robust side of the tyre to ensure a long tyre service life, even under maximum load. The result: greater economy and extended service life.



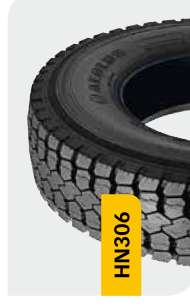
ADR69

- The extra-wide tread design
- A larger ground contact area ensures greater safety and shorter braking distances more even wear.
- Six-row tread profiling permits more even wear.
- A new rubber compound as a basis for high mileage performance
- Optimised adhesion and greater resistance to damage
- Improved traction in adverse weather conditions
- M+S & 3PMS label to indicate tyres which are appropriate for winter weather conditions, and lower fixed costs



HN355

- Low deformation reduces rolling resistance and fuel consumption
- Special pattern for more even wear and improved mileage
- Superb braking performance due to an optimised rubber compound
- A particularly robust shoulder design prevents impact damage
- Optimised grip, even under very diverse conditions
- Excellent traction, even in adverse weather conditions
- M+S & 3PMS label to indicate tyres which are appropriate for winter weather conditions, and lower fixed costs



HN306

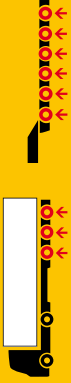
- Remarkable resistance to cuts, punctures and wear and tear
- Optimised rubber compound provides outstanding braking performance
- Especially deep pattern for high mileage
- Outstanding economy thanks to an even wear pattern
- Optimum grip and traction, even in adverse weather conditions
- M+S label to indicate tyres which are appropriate for winter weather conditions, and lower fixed costs

Size	Pattern	L/S Index	TL/TT	M+S	3PMS			DB	Class
9.5R17.5	ADR35	136/134M	TL	M+S		F		73	
20S/75R17.5	ADR35	124/122M	TL	M+S		E		73	
21S/75R17.5	ADR35	127/124M	TL	M+S		E		73	
22S/75R17.5	ADR35	129/127M	TL	M+S		E		73	
23S/75R17.5	ADR35	132/129M	TL	M+S		E		73	
24S/70R17.5	ADR35	136/134M	TL	M+S		E		73	
24S/70R19.5	HN366+	136/134M (136/135J)	TL	M+S		E		76	
28S/70R19.5	ADR35	144/142M (145/143L)	TL	M+S		E		73	

Size	Pattern	L/S Index	TL/TT	M+S	3PMS			DB	Class
26S/70R19.5	HN355	140/138M	TL	M+S		E		73	
10R22.5	HN355	144/142M	TL	M+S		D		73	
12R22.5	HN355	152/149M	TL	M+S		D		73	
25S/70R22.5	HN355	140/137M (140/140L)	TL	M+S		E		73	
27S/70R22.5	HN355	148/145M	TL	M+S		D		73	
27S/80R22.5	HN306	149/146L (148/145M)	TL	M+S		D		76	
29S/60R22.5	HN355	149/146L (150/147K)	TL	M+S		D		73	
29S/80R22.5	ADR69	152/149M	TL	M+S		D		74	
31S/70R22.5	ADR69	152/148M (154/150L)	TL	M+S		D		74	
31S/80R22.5	ADR69	154/150M (156/150L)	TL	M+S		D		74	



Regional Trailer and flatbed trailer



The solution for regional transport: trailers and flatbed trailer

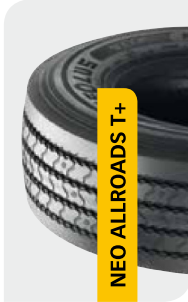
These are regarded as particularly practical at the hot spots in the logistics chain, at points where outstanding performance is required. Both the casing and the overall structure of the tyre are designed here to perform exceptionally well. This is made possible by low tyre deformation.

Excellent reliability, durability and hence economy are possible thanks to the new rubber compound, which leads to less heat in the tyres. "The" arguments for use under the toughest conditions, with extensive use and rough handling due to kerbstones and potholes.

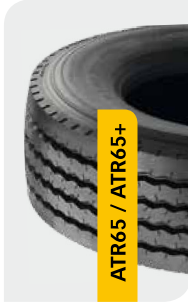
- 4-layer strip technology
- Excellent price per kilometre
- Maximum stability
- Low rolling resistance
- High reliability
- Superb 'roundness'
- Perfect for tread renewal

- Extremely resilient casing design ensures success when fitted as original equipment
- High-performance rubber compound for even wear
- Performance-optimised pattern design as a high performance alternative to premium brands
- Eco-friendly thanks to innovative technology
- Economical, high mileage performance thanks to tried and tested quality
- Energy efficiency thanks to lower rolling resistance
- Exceptionally low price per kilometre thanks to retreading capability

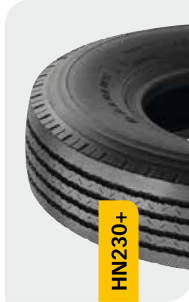
- Reinforced tyre shoulders, designed for low loaders
- Optimised rolling resistance for more kilometres
- Can be used in all necessary axle positions in the low loader segment
- High load bearing capacity of five to six tonnes per axle, depending on configuration
- Particularly resistant to general damage and damage caused by hitting objects
- Higher mileage performance thanks to an optimised ground contact area and improved wear pattern
- Reliable, low cost per kilometre, economical



NEO ALLROADS T+



ATR65 / ATR65+



HN230+

Size	Pattern	L/S index	TL/TT	M+S	DB	Class	
							DB
8.25R15	HN230+	143/141G (141/140J)	TT SET	M+S	C	76	4)
245/70R17.5	ATR65	143/141I (146/146F)	TL	M+S	C	71	4)
265/70R19.5	ATR65	143/141I	TL	M+S	C	71	4)
285/70R19.5	ATR65	150/147J	TL	M+S	C	71	4)
385/55R19.5	ATR65	156J	TL	M+S	C	71	4)
385/55R22.5	ATR65	160I (158L)	TL	M+S	C	76	4)
385/65R22.5	ATR65	160K (158L)	TL	M+S	C	71	4)
385/65R22.5	ATR65+	164K	TL	M+S	C	74	4)
385/65R22.5	NEO Allroads T+	160K (158L)	TL	M+S	C	76	4)
425/65R22.5	ATR65	165K	TL	M+S	C	71	4)
445/65R22.5	ATR65	169K	TL	M+S	C	71	4)

AEOLUS TYRES

Technology Meets Performance

Aeolus AR28 the quality tyre for mobile cranes



- ✓ Robust casing construction
- ✓ Symmetrical block pattern
- ✓ Special rubber compound technology

Size	LS index	TRA Code	Rim	Dimensions (mm)		Tread depth (mm)	Pressure (bar)
				Width	Diameter		
385/95R25	170F	E-2	10.00/1.5	389	1363	24	9,00
445/95R25	174F	E-2	11.25/2.0	444	1486	26	9,00

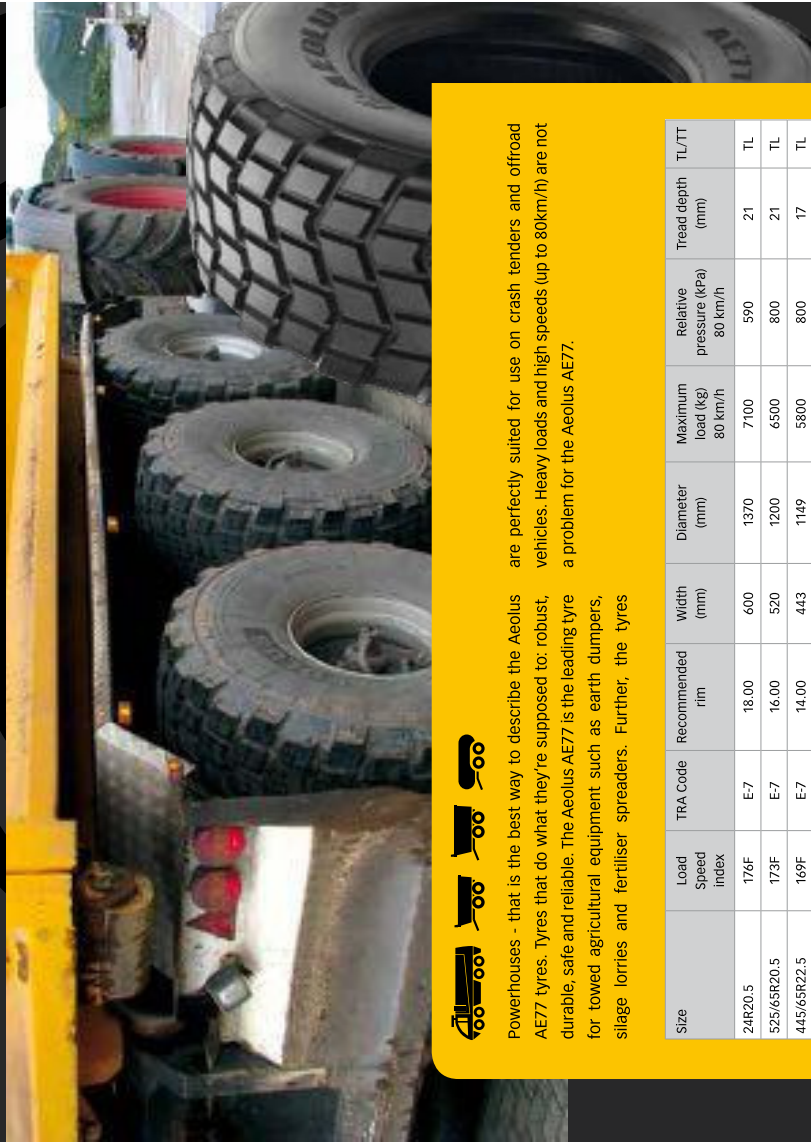
MORE INFORMATION?
www.aeolus-tyres.com/AR28 - info@aeolus-tyres.com



AEOLUS TYRES

Technology Meets Performance

Aeolus AE77: The ideal tyre for towed agricultural equipment, crash tenders and off-road vehicles

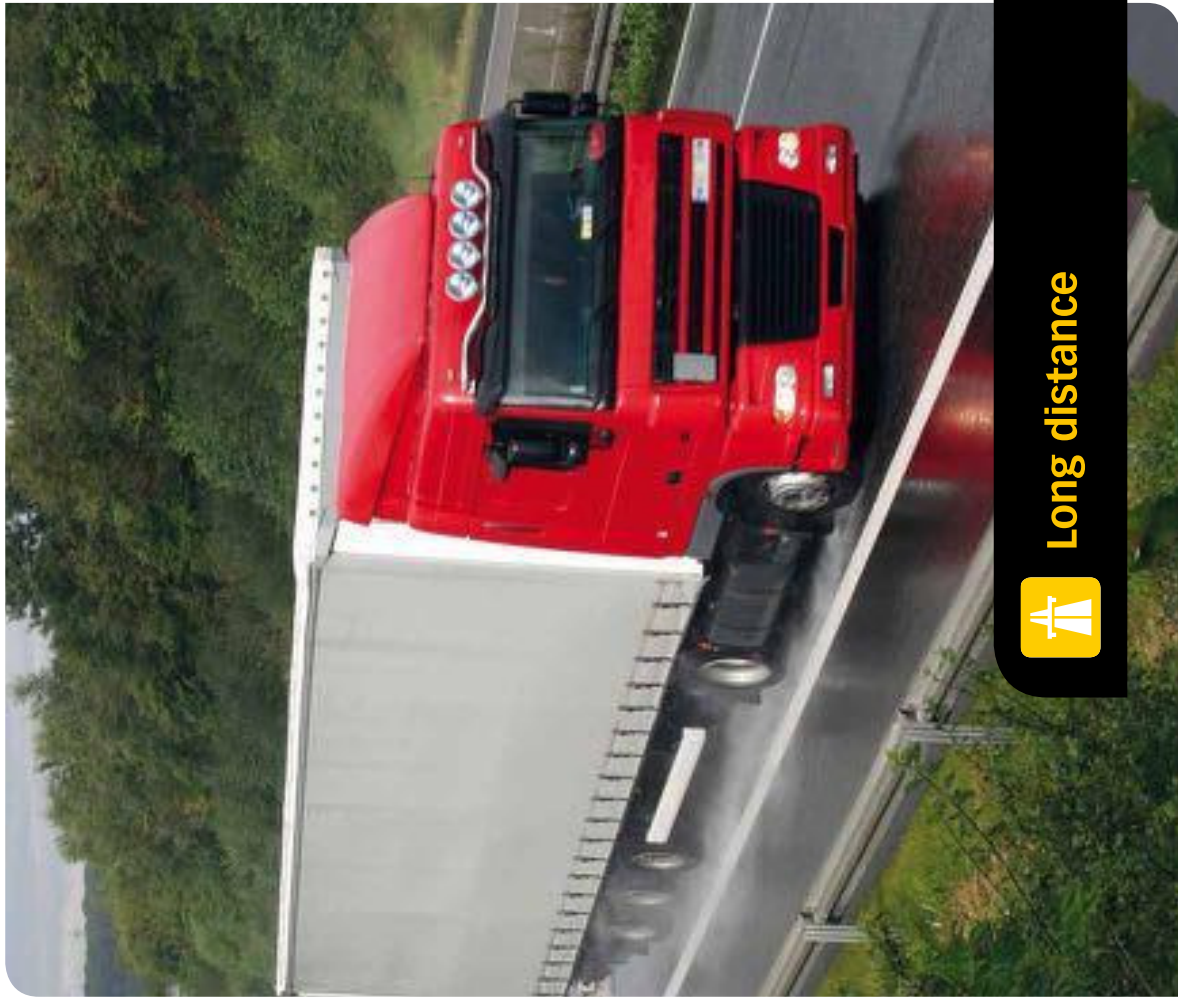


Powerhouses - that is the best way to describe the Aeolus AE77 tyres. Tyres that do what they're supposed to: robust, durable, safe and reliable. The Aeolus AE77 is the leading tyre for towed agricultural equipment such as earth dumpers, silage lorries and fertiliser spreaders. Further, the tyres are perfectly suited for use on crash tenders and offroad vehicles. Heavy loads and high speeds (up to 80km/h) are not a problem for the Aeolus AE77.

Size	Load Speed Index	TRA Code	Recommended rim	Width (mm)	Diameter (mm)	Maximum load (kg) 80 km/h	Relative pressure (kPa) 80 km/h	Tread depth (mm)	TL/TT
24R20.5	176F	E-7	18.00	600	1370	7100	590	21	TL
525/65R20.5	173F	E-7	16.00	520	1200	6500	800	21	TL
445/65R22.5	169F	E-7	14.00	443	1149	5800	800	17	TL

More information?

www.aeolus-tyres.com/AE77 - info@aeolus-tyres.com



Long distance

AEOLUS TYRES

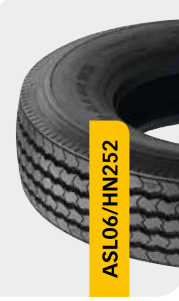
Technology Meets Performance



Meeting the requirements of the transport industry: long distance steer axle

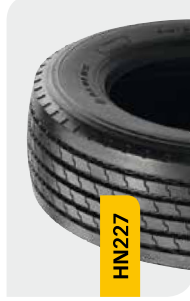
The wishes of customers and the special demands of the market segment are at the heart of the entire portfolio of tyres at Aeolus. This portfolio is aggressively tailored to suit the demands of the transport industry for long distance steer axle tyres. These demands include primary considerations such as reduced rolling resistance, fuel saving, tread stability (ensuring

low tyre temperatures, reducing wear), a wear-resistant tread compound resulting from innovative new technology for efficient minimisation of rolling noise, high traction and grip under braking and low price per kilometre for optimum efficiency, i.e. a high return on investment.



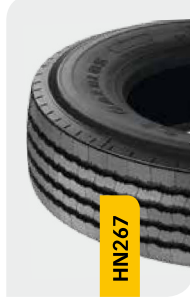
ASLO6/HN252

- Four main grooves ensure comfortable steering and directional stability
- Pattern optimising rolling resistance, with stone-repelling design
- Robustly designed closed shoulders keep impact damage to a minimum
- Extensive siping and a deep pattern for high mileage
- Even wear thanks to a large ground contact area
- Extremely economical due to innovative rubber compound technology
- Regroovable, suitable for retreading



HN227

- Significantly improved grip and traction thanks to the advanced pattern
- Five main grooves provide directional stability and comfortable steering
- New rubber compound for impervious tread
- Keeps impact damage to a minimum thanks to a robustly designed closed shoulder
- Large ground contact area for even wear and tear
- Extreme comfort thanks to even wear
- Regroovable, suitable for retreading



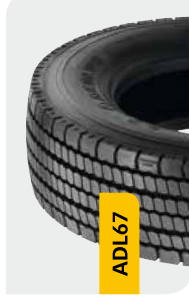
HN267

- High resistance and durability in respect of damage
- Even pressure distribution in the tyre contact area
- More traction on wet roads thanks to sinusoidal tread grooves
- Protection against damage thanks to reinforced sides
- Fuel savings due to reduced rolling resistance
- Precise manoeuvrability and optimised directional stability on long distance journeys
- Regroovable, suitable for retreading

Aeolus ADL67 – for international transport, on drive axles

The ADL67 is created consistently to the specifications of modern long distance tyres which are required to cover long distances from A to B, mostly on motorways and A roads, without having to constantly accelerate and brake. Optimum driving comfort, high mileage and fuel efficiency are paramount. Tyres are known to affect the latter by a factor of

up to around 30 per cent. Hence the rubber compound, pattern design and above the rolling resistance used are designed to promote these factors, but without having an adverse impact on traction (grip) and braking performance.



ADL67

- Especially high mileage thanks to extremely low rolling resistance
- Lower fuel consumption compared with the previous model
- Lower, particularly even wear
- High mileage and economy
- Tread impervious to general damage and damage caused by hitting objects
- Regroovable, suitable for retreading, suitable for use with a retarder
- M+S & 3PMS label indicates that the tyres are appropriate for winter weather conditions

Size	Pattern	L/S Index	TL/TT	M+S	3PMS	DB	Class
9R22.5	ASLO6/HN252	136/134M	TL	M+S	C	B	73
275/80R22.5	HN267	149/146L (148/145M)	TL	M+S	D	C	76
295/60R22.5	ASLO6/HN252	149/146L (150/147K)	TL	M+S	C	C	76
295/80R22.5	ASLO6/HN252	152/148M	TL	M+S	C	C	76
315/60R22.5	HN227	152/148L	TL	M+S	C	C	73
315/70R22.5	ASLO6/HN252	152/148M (154/150L)	TL	M+S	C	C	76
315/80R22.5	ASLO6 /HN252	154/150M (156/150L)	TL	M+S	C	C	73

Size	Pattern	L/S Index	TL/TT	M+S	3PMS	DB	Class
295/60R22.5	ADL67	149/146L (150/147K)	TL	M+S	E	C	73
295/80R22.5	ADL67	152/148M	TL	M+S	D	C	73
315/60R22.5	ADL67	152/148L	TL	M+S	E	C	77
315/70R22.5	ADL67	152/148M (154/150L)	TL	M+S	E	C	73
315/80R22.5	ADL67	154/151M (156/150L)	TL	M+S	E	C	73



Long distance Trailer



Long distance Flatbed trailer

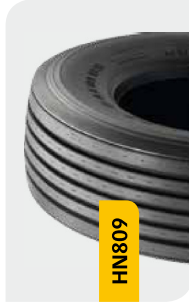


Optimised for long distance trailer axles

Economy and safety are crucial to haulage companies and specialist fleet managers when choosing tyres for trailers. Reducing operating costs is an elementary requirement when it comes to competitiveness in the industry, and the HN809 and HN829 could well be the answer.

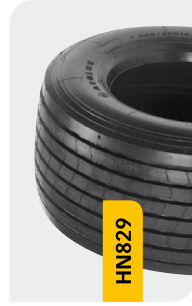
Flatbed trailer tyres, even in the popular "small" sizes, have to be designed to suit their purpose right from the basic concept stage because of the frequent extreme loads they have to bear. A casing designed to cope with the familiar tough challenges faced is absolutely crucial. A similarly designed tyre bead area provides a firm foundation on which even extremely

heavy loads can be transported long distances and arrive safely. Here, Aeolus offers two complementary trailer tyres in dimensions truly relevant for the market, and with the 19.5-inch version it has a "big brother" for the other two 17.5-inch variants.



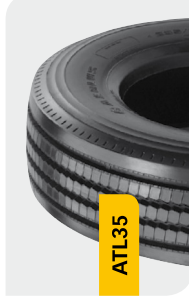
HN809

- Especially resistant to shear load
- Specially designed tyre shoulder area for low loader use
- Energy-efficient rubber compounds help to improve economy
- Five longitudinal grooves for efficient water deflection on wet roads
- Enlarged ground contact area improves reliability
- Interesting pricing in great contrast to prices offered by competitors
- regroovable, suitable for retreading



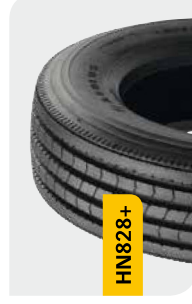
HN829

- Improved mileage performance in combination with extreme comfort
- The greatest possible safety and economy for the transport industry
- Robust structure, designed for use on low loaders and trailers
- Seven circumferential pattern grooves for supremely capable performance
- Designed for transport efficiency and maximum customer benefit
- Regroovable



ATL35

- Available in both sizes particularly relevant to the market
- Lower rolling resistance in comparison to its predecessor
- High tyre air volume relieves stress on the low loader and the cargo
- Optimised heat dissipation even in very enclosed spaces
- High traction and shorter braking distances thanks to a new rubber compound
- Special profiling ensures optimised directional stability
- Rubber compound permits extremely economical driving



HN828+

- The "big brother" of the other two 17.5-inch variants
- Designed to transport heavy loads safely to their destination
- Special, durable tyre bead area
- Considerably reduced rolling resistance compared to the predecessor
- Wide tread pattern for optimum handling
- New rubber compound and profiling tailored to suit the purpose
- Designed for international long distance motorway driving

Size	Pattern	L/S index	TL/TT	M+S	3PMS	DB	Class
435/50R19.5	HN829	160J	TL	M+S	C	C	73
445/45R19.5	HN829	160J	TL	M+S	D	C	76
385/65R22.5	HN809	160K (158L)	TL	M+S	C	C	76

Size	Pattern	L/S index	TL/TT	M+S	3PMS	DB	Class
215/75R17.5	ATL35	135/133J	TL	M+S	△	C	73
235/75R17.5	ATL35	143/141J (144/144F)	TL	M+S	△	C	76
245/70R19.5	HN828+	141/140J	TL	M+S	D	C	76